

The background features a light gray hand icon with dotted lines extending from its fingers, set against a dark gray circular backdrop. The overall background is a light gray with a subtle pattern of dotted lines.

# Endoscopy explained



Informed with  
**care**

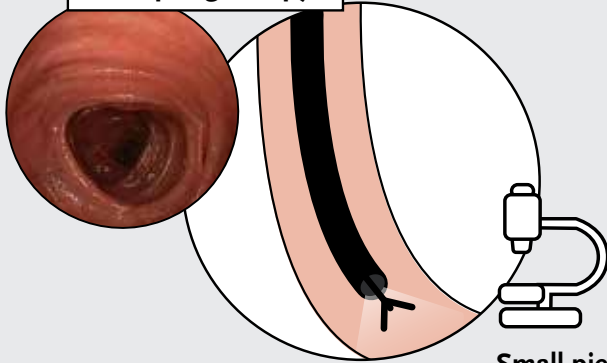


# Endoscopy

A procedure used to look inside the digestive tract

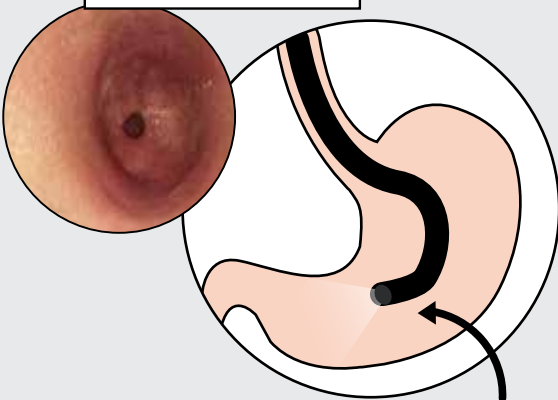
Upper endoscopy is used to examine the oesophagus, stomach and the first part of the small intestine

## Oesophagoscopy

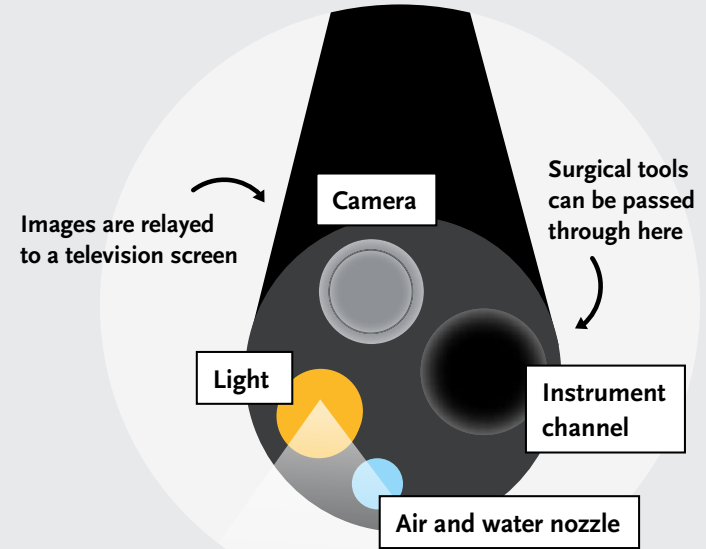


Small pieces of tissue (biopsies) can be taken for lab testing

## Gastroscopy



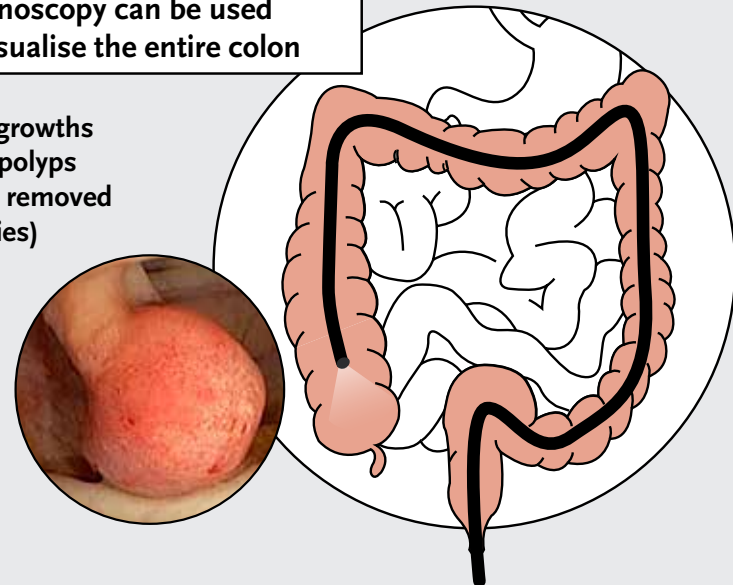
The end of the endoscope bends to look around the stomach



Endoscopes are well-equipped to take high-definition images

Colonoscopy can be used to visualise the entire colon

Small growths called polyps can be removed (biopsies)

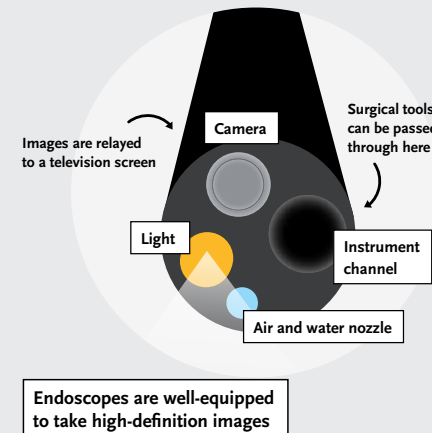


# Endoscopy

A procedure used to look inside the digestive tract

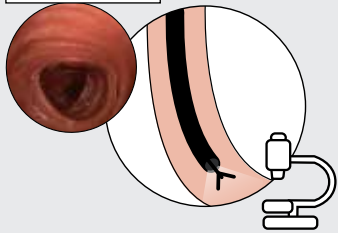
Upper endoscopy is used to examine the oesophagus, stomach and the first part of the small intestine

- Endoscopies are used to take a close look inside your digestive tract to find out what's causing your symptoms<sup>1,2</sup>
- They can be used to rule out or confirm a diagnosis and even perform minor treatments<sup>1</sup>



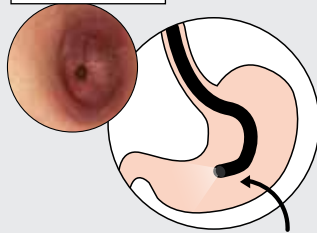
- Put simply, endoscopes are just flexible tubes with a light and camera at one end<sup>5</sup>
- Tiny instruments can be passed through the endoscope to perform different procedures, like take small samples of tissue (biopsies) or clear blockages<sup>4</sup>
- Proper preparation is the key to a safe, successful endoscopy – make sure you stick to the plan your endoscopist has given you<sup>1</sup>

Oesophagoscopy



Small pieces of tissue (biopsies) can be taken for lab testing

Gastroscopy

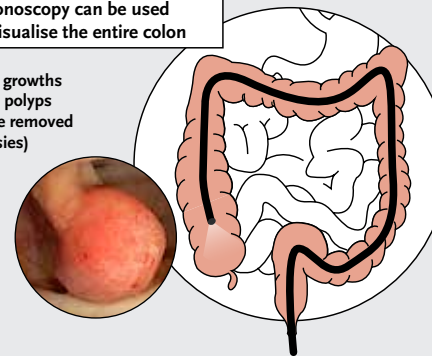


The end of the endoscope bends to look around the stomach

- Oesophagoscopy and gastroscopy are standard procedures used to investigate problems in the upper part of your digestive tract (sometimes the procedure is called an oesophago-gastro-duodenoscopy or OGD)<sup>3</sup>
- A long, flexible telescope called an endoscope is passed down slowly through your nose or mouth<sup>4</sup>
- Using live video from the camera, your doctor can examine your oesophagus and stomach lining to look for redness or inflammation<sup>5</sup>
- Sometimes, small samples of tissue (biopsies) are taken from a few different places to be tested in the lab<sup>3</sup>
- This shouldn't be painful, but you might be uncomfortable at times<sup>6</sup>

Colonoscopy can be used to visualise the entire colon

Small growths called polyps can be removed (biopsies)



- A colonoscopy is used to look inside your large intestine (or colon) to figure out what's causing your symptoms<sup>7</sup>
- The colonoscope is inserted into your bottom while you're anaesthetised and transmits live video images to a television screen<sup>7</sup>
- Sometimes, small samples of tissue (biopsies) are taken from a few different places to be tested in the lab. This isn't painful<sup>7</sup>
- Many people have small, growths called polyps in their colon that are usually harmless, but they can be removed during the colonoscopy for further testing<sup>7</sup>

## References

### Endoscopy

1. Herman A. Nursing Made Incredibly Easy 2010; 8(3): 5-10.
2. Nabh A *et al.* 'Diagnostic endoscopy' In: Endoscopy of GI Tract IntechOpen
3. Beg S *et al.* Gut 2017; 66(11): 1886-99.
4. Kohli DR, Baillie J. 'How Endoscopes Work' In: Clinical Gastrointestinal Endoscopy (Third Edition). Elsevier Inc; 2019.
5. NHS Health A-Z. Endoscopy. Available at: [www.nhs.uk](http://www.nhs.uk)
6. NHS Health A-Z. Gastroscopy. Available at: [www.nhs.uk](http://www.nhs.uk)
7. National Institute of Diabetes and Digestive and Kidney Diseases. Colonoscopy. Available at: <https://www.niddk.nih.gov/>

## Abbreviations

OGD: oesophago-gastro-duodenoscopy

## Useful links:

[www.dralk.co.uk](http://www.dralk.co.uk)

Adverse events should be reported. Reporting forms and information in Ireland can be found at [www.hpra.ie](http://www.hpra.ie) and in the UK at [www.mhra.gov.uk/yellowcard](http://www.mhra.gov.uk/yellowcard) or search for MHRA Yellow Card in the Google Play or Apple App Store. Adverse events should also be reported to Dr Falk Pharma UK Ltd. at [PV@drfalkpharma.co.uk](mailto:PV@drfalkpharma.co.uk)

Provided as a service to medicine by Dr Falk Pharma UK Ltd,  
Bourne End Business Park, Cores End Rd, Bourne End, SL8 5AS  
Registered in England No: 2307698

Date of preparation: September 2021

UI-2100109



Informed with  
**care**

