



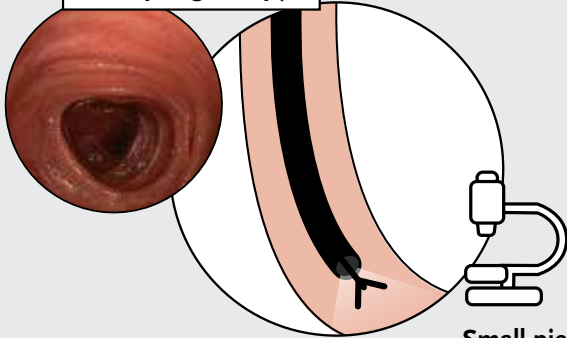
Endoscopy
explained

Endoscopy

A procedure used to look inside the digestive tract

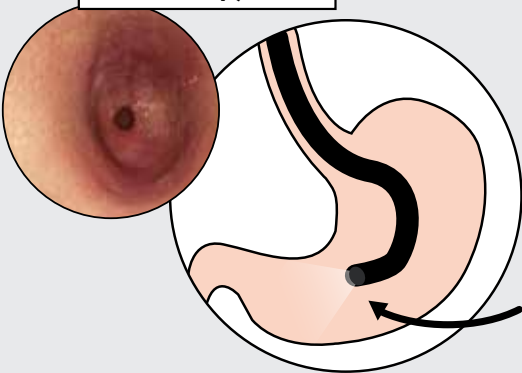
Upper endoscopy is used to examine the oesophagus, stomach and the first part of the small intestine

Oesophagoscopy



Small pieces of tissue (biopsies) can be taken for lab testing

Gastroscopy

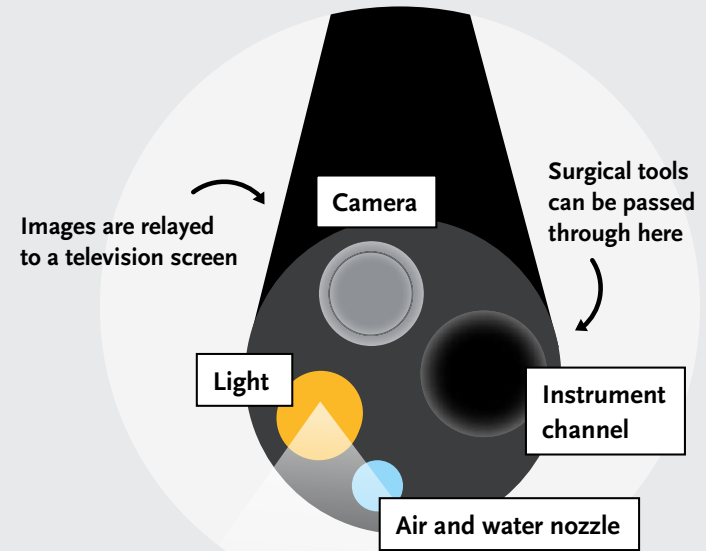


The end of the endoscope bends to look around the stomach

Having a colonoscopy



Having a gastroscopy



Images are relayed to a television screen

Surgical tools can be passed through here

Light

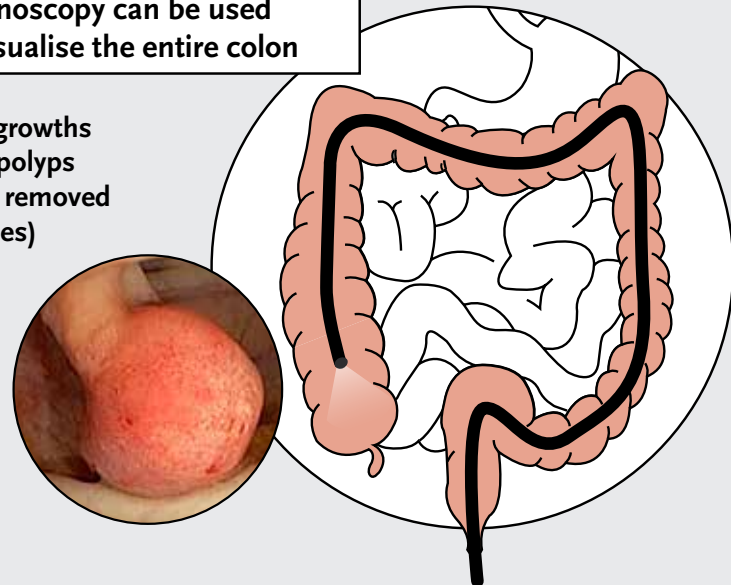
Instrument channel

Air and water nozzle

Endoscopes are well-equipped to take high-definition images

Colonoscopy can be used to visualise the entire colon

Small growths called polyps can be removed (biopsies)

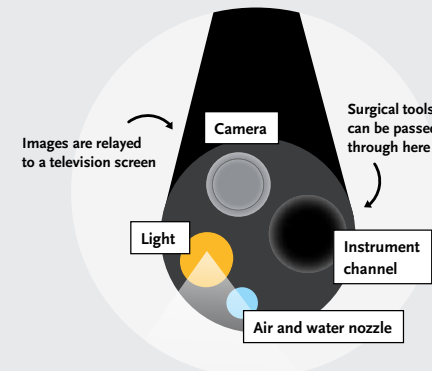


Endoscopy

A procedure used to look inside the digestive tract

Upper endoscopy is used to examine the oesophagus, stomach and the first part of the small intestine

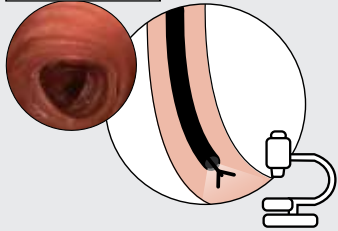
- Endoscopies are used to take a close look inside your digestive tract to find out what's causing your symptoms^{1,2}
- They can be used to rule out or confirm a diagnosis and even perform minor treatments¹



Endoscopes are well-equipped to take high-definition images

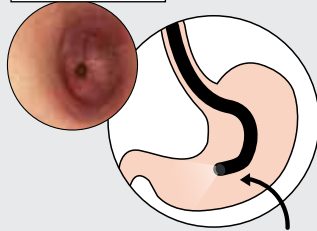
- Put simply, endoscopes are just flexible tubes with a light and camera at one end⁵
- Tiny instruments can be passed through the endoscope to perform different procedures, like take small samples of tissue (biopsies) or clear blockages⁴
- Proper preparation is the key to a safe, successful endoscopy – make sure you stick to the plan your endoscopist has given you¹

Oesophagoscopy



Small pieces of tissue (biopsies) can be taken for lab testing

Gastroscopy

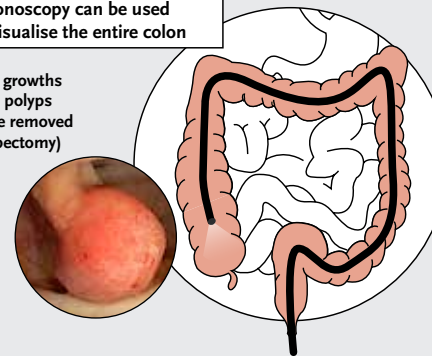


The end of the endoscope bends to look around the stomach

- Oesophagoscopy and gastroscopy are standard procedures used to investigate problems in the upper part of your digestive tract (sometimes the procedure is called an oesophago-gastro-duodenoscopy or OGD)³
- A long, flexible telescope called an endoscope is passed down slowly through your nose or mouth⁴
- Using live video from the camera, your doctor can examine your oesophagus and stomach lining to look for redness or inflammation⁵
- Sometimes, small samples of tissue (biopsies) are taken from a few different places to be tested in the lab³
- This shouldn't be painful, but you might feel uncomfortable at times⁶

Colonoscopy can be used to visualise the entire colon

Small growths called polyps can be removed (polypectomy)



- A colonoscopy is used to look inside your large intestine (or colon) to figure out what's causing your symptoms⁷
- The colonoscope is inserted into your bottom while you're locally anaesthetised and transmits live video images to a television screen⁷
- Sometimes, small samples of tissue (biopsies) are taken from a few different places to be tested in the lab. This isn't painful⁷
- Many people have small, growths called polyps in their colon that are usually harmless, but they can be removed during the colonoscopy for further testing⁷

References

Endoscopy

1. Herman A. Nursing Made Incredibly Easy 2010; 8(3): 5-10.
2. Nabh A *et al.* 'Diagnostic endoscopy' In: Endoscopy of GI Tract IntechOpen.
3. Beg S *et al.* Gut 2017; 66(11): 1886-99.
4. Kohli DR, Baillie J. 'How Endoscopes Work' In: Clinical Gastrointestinal Endoscopy (Third Edition). Elsevier Inc; 2019.
5. NHS Health A-Z. Endoscopy. Available at: www.nhs.uk
6. NHS Health A-Z. Gastroscopy. Available at: www.nhs.uk
7. National Institute of Diabetes and Digestive and Kidney Diseases. Colonoscopy. Available at: <https://www.niddk.nih.gov/>

Abbreviations

OGD: oesophago-gastro-duodenoscopy

Useful links:

www.dralk.co.uk

Adverse events should be reported. Reporting forms and information in Ireland can be found at www.hpra.ie and in the UK at www.mhra.gov.uk/yellowcard or search for MHRA Yellow Card in the Google Play or Apple App Store. Adverse events should also be reported to Dr Falk Pharma UK Ltd. at PV@drfalkpharma.co.uk

Provided as a service to medicine by Dr Falk Pharma UK Ltd, Unit K, Bourne End Business Park, Cores End Rd, Bourne End, SL8 5AS
Registered in England No: 2307698

Date of preparation: April 2024

UI-2400071

